



UTSA[®]

The University of Texas at San Antonio[™]

Ithaka S & R Local Survey at UTSA

Posie Aagaard, Assistant Dean for Collections
and Curriculum Support

Friday, April 22, 2015

PLANNING FOR SUCCESS

Cross-Functional & Team-Based

- Librarians
- Communications/Marketing team
- Systems team

Other Campus Stakeholders

- Teaching & Learning
- Online Learning



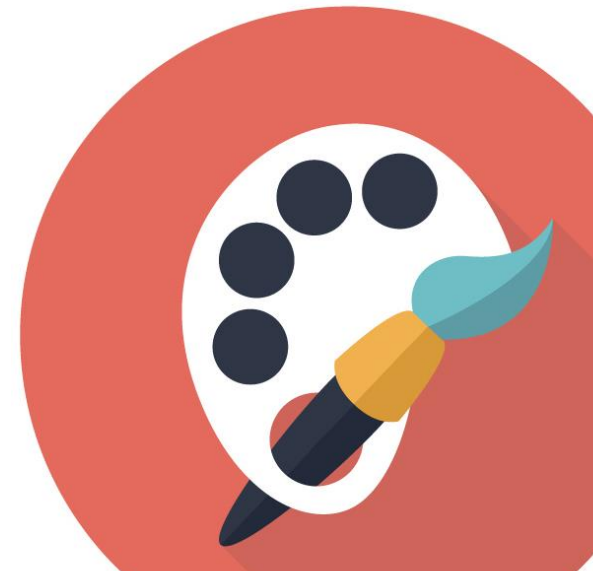
SURVEY DESIGN

- Selecting survey version
- Working with Ithaka S & R to create new custom module



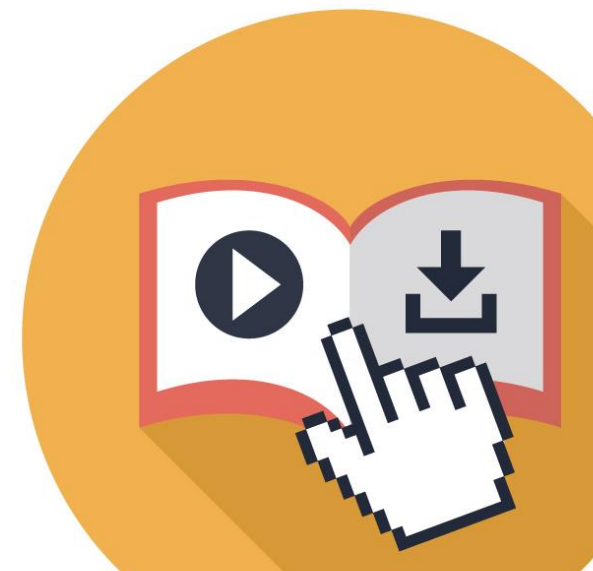
DEPLOYMENT & INCENTIVES

- Determining faculty categories, whitelisting, and more
- Drawing for a print from Special Collections - two faculty winners randomly selected



OVERALL RESULTS

- 20% participation rate: 273 completed surveys
- Project team analysis and report
- Library Dean's message to faculty



STRATEGIC IMPACT

- Information for campus administrative team
- Faculty Center planning
- Textbook purchasing program



THANKS!

UTSA[®]

The University of Texas at San Antonio[™]

POSIE AAGAARD



@PosieAagaard



[linkedin.com/in/PosieAagaard](https://www.linkedin.com/in/PosieAagaard)



Posie.Aagaard@utsa.edu